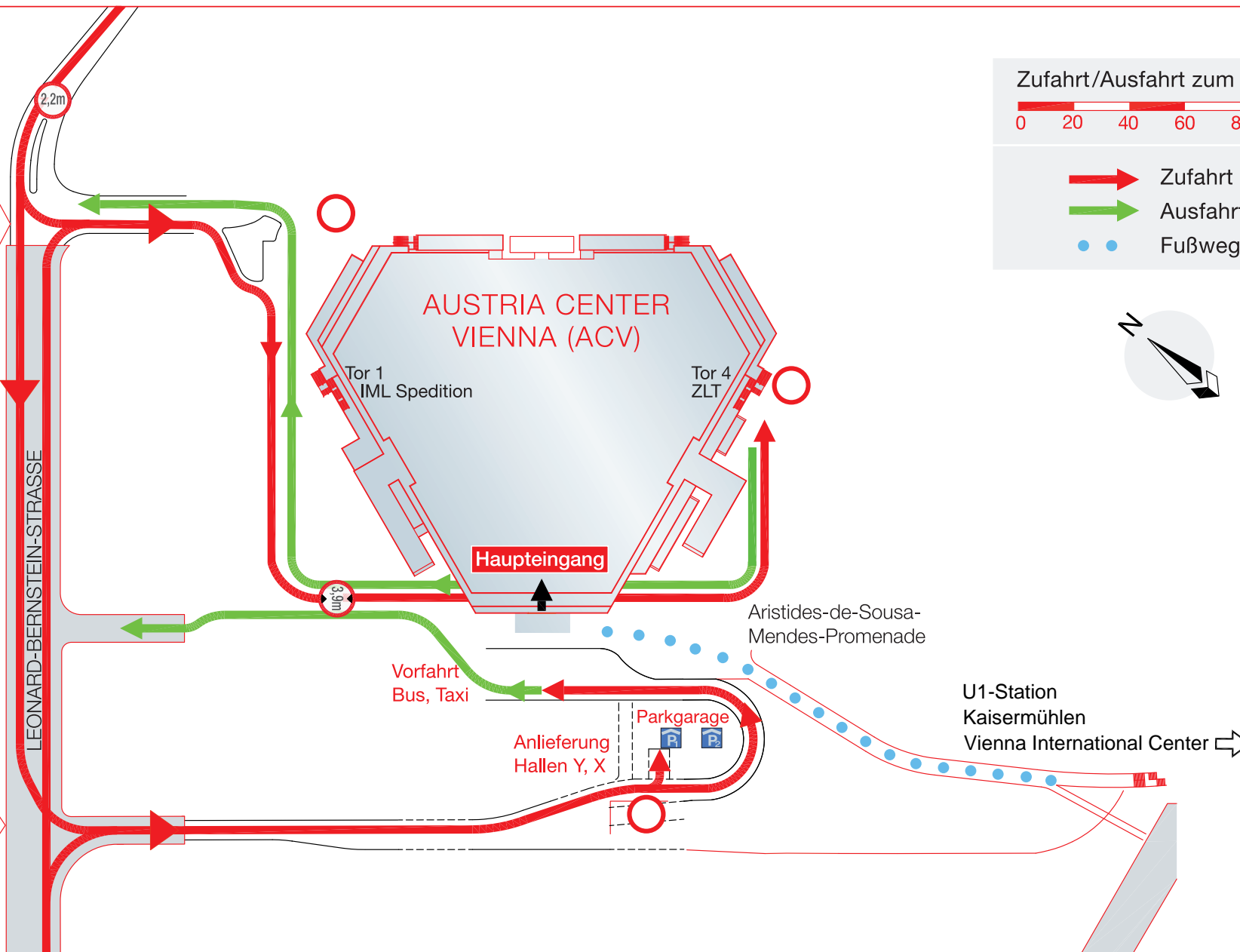


- Zufahrt
- Ausfahrt
- Fußweg



Anlieferung
AUSTRIA CENTER
Tore 1, 4, Halle Z über IML



Parkgaragen
Vorfahrt Bus, Taxi
Anlieferung Hallen Y, X

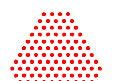
Vorfahrt
Bus, Taxi

Anlieferung
Hallen Y, X

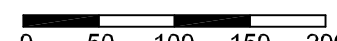
Parkgarage

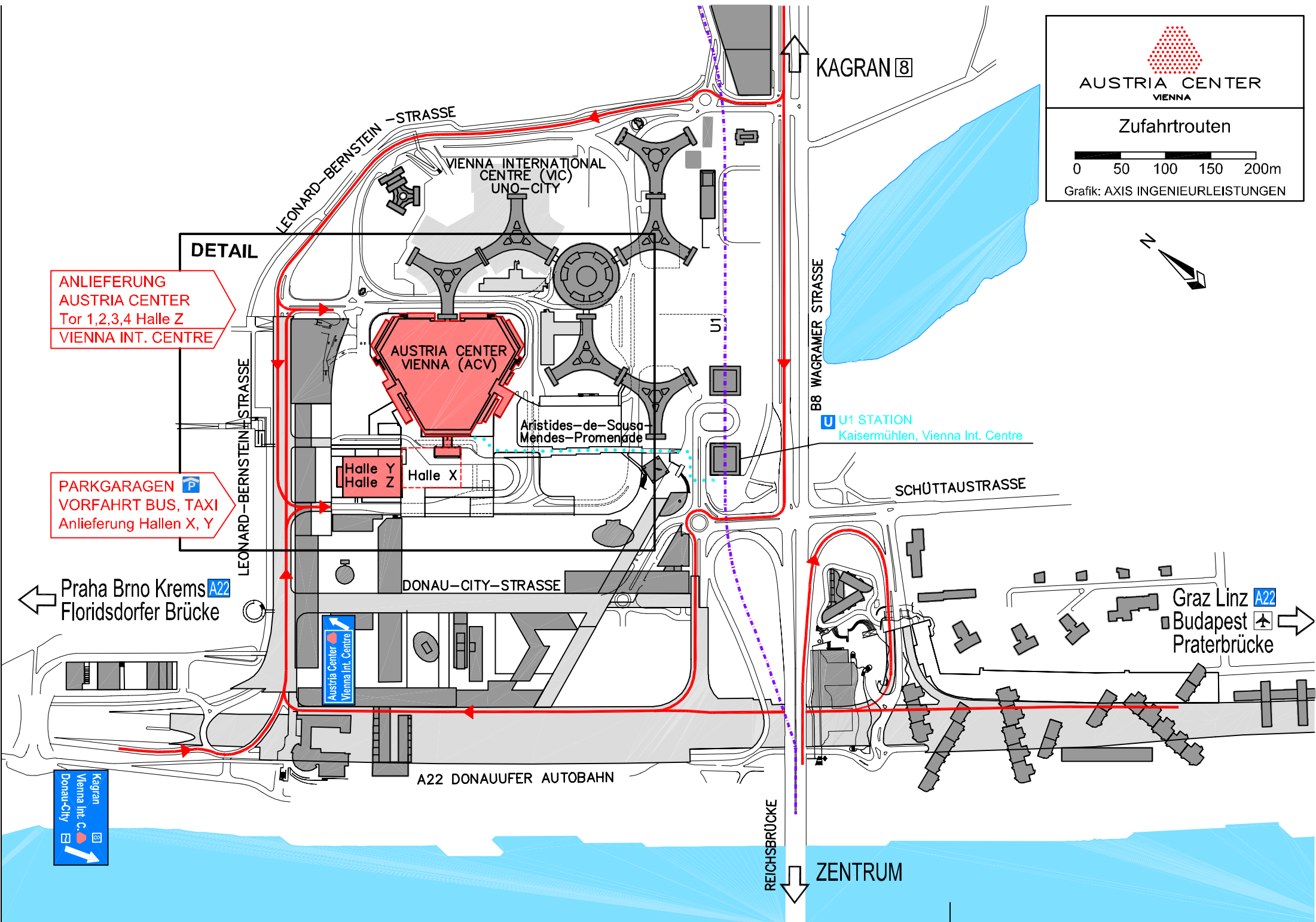
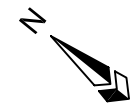
Aristides-de-Sousa-
Mendes-Promenade

U1-Station
Kaisermühlen
Vienna International Center


AUSTRIA CENTER
 VIENNA

Zufahrtrouten


 0 50 100 150 200m
 Grafik: AXIS INGENIEURLEISTUNGEN



ANLIEFERUNG
AUSTRIA CENTER
 Tor 1,2,3,4 Halle Z
 VIENNA INT. CENTRE

PARKGARAGEN
 VORFAHRT BUS, TAXI
 Anlieferung Hallen X, Y

DETAIL

